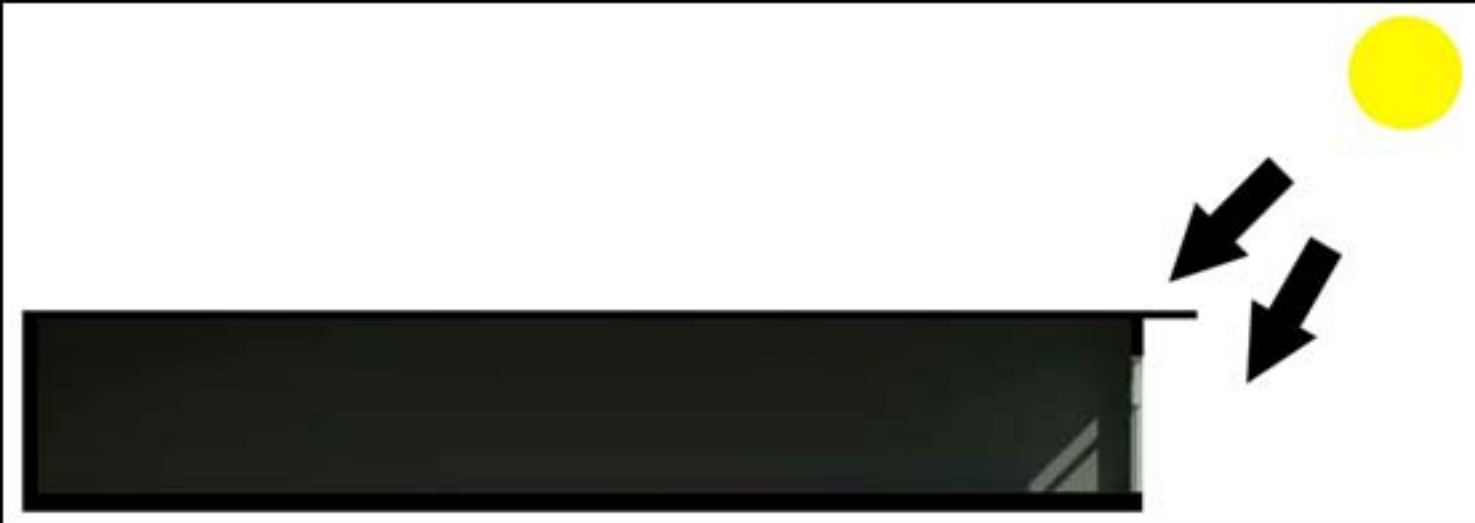
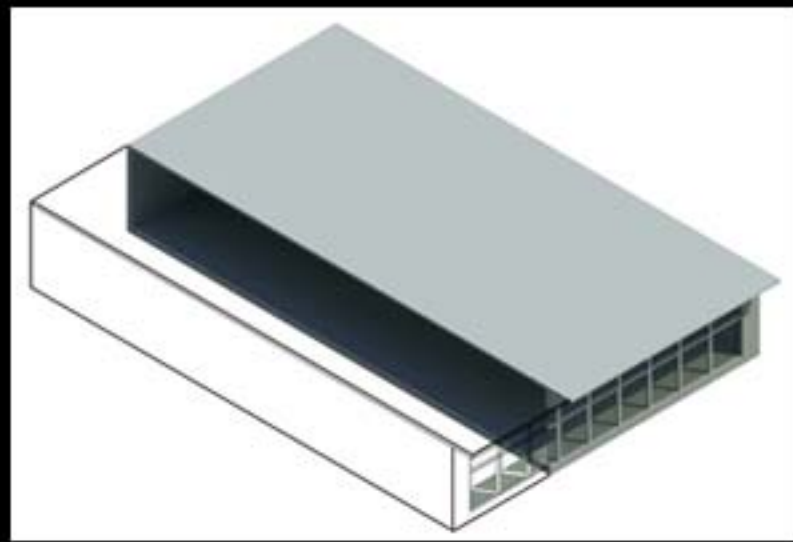
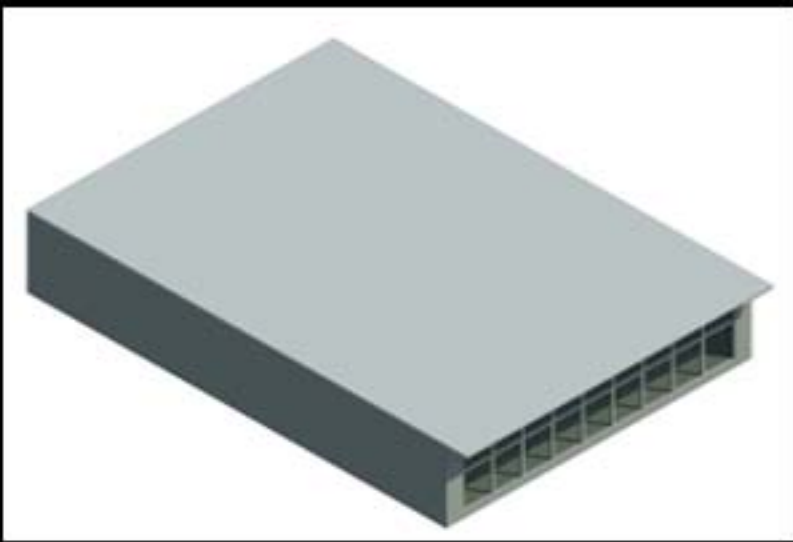
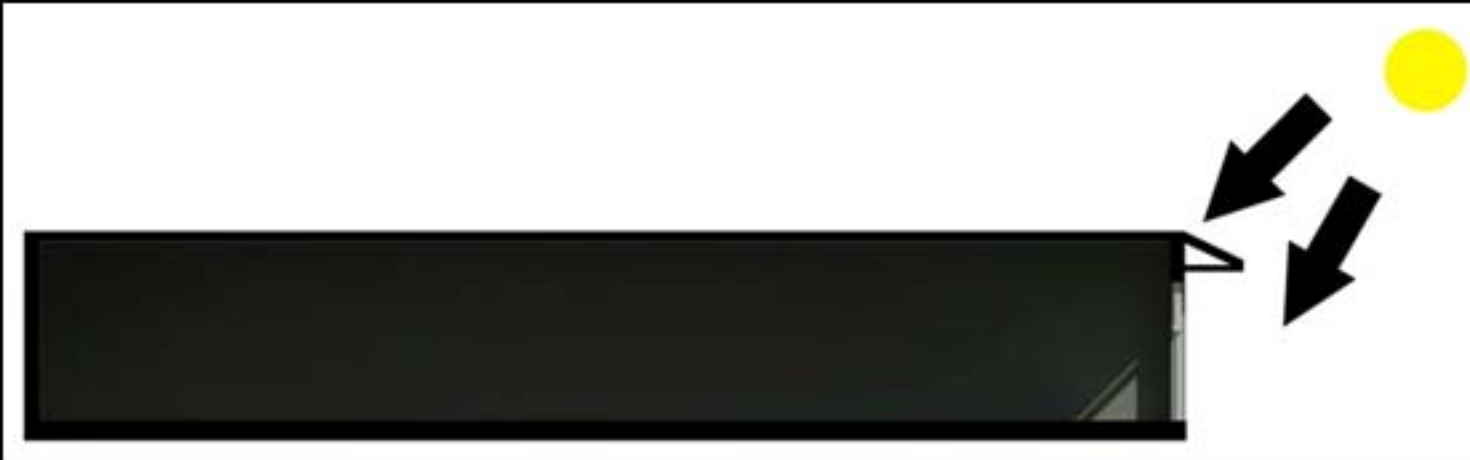
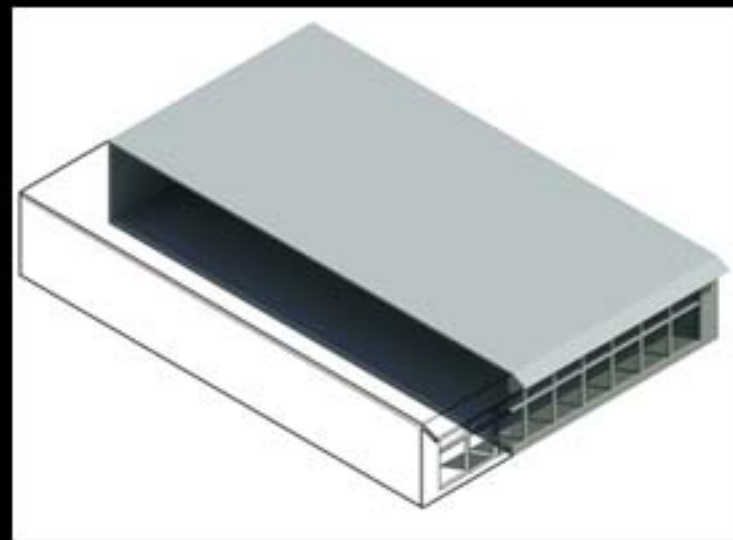
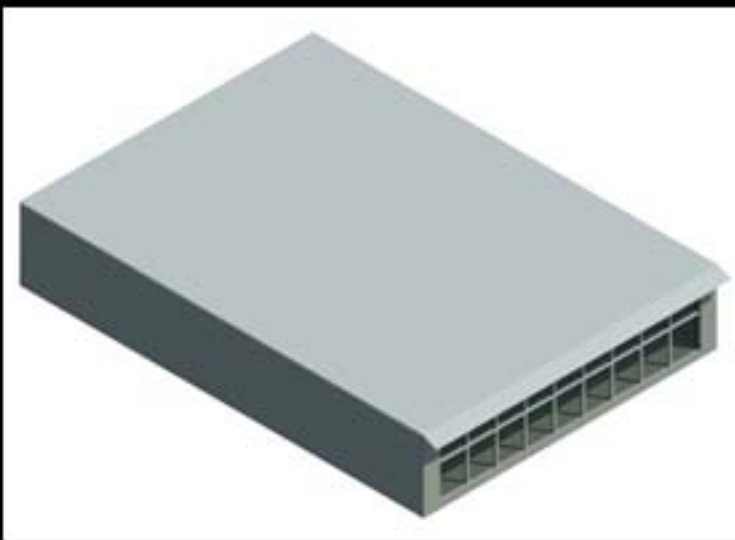


SIDELIGHT CONCEPTS



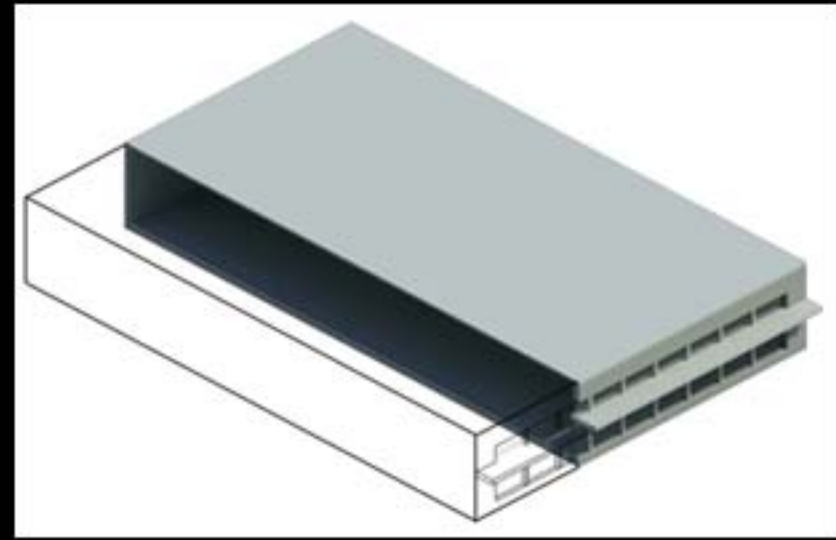
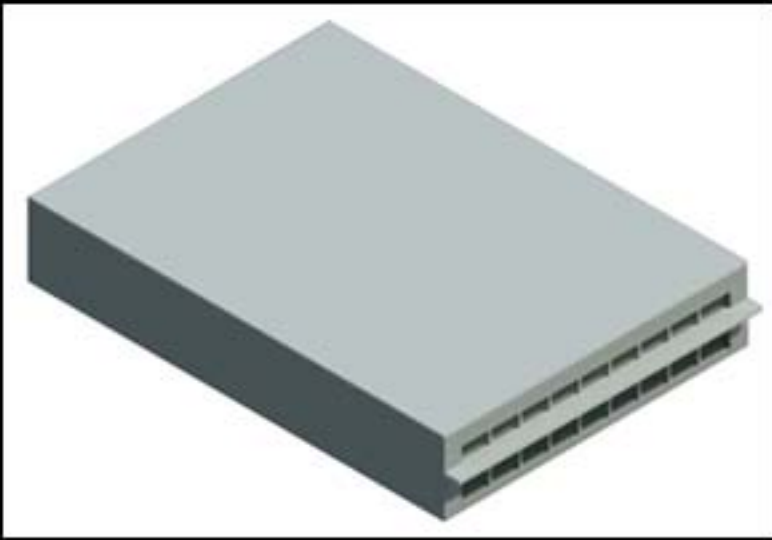
SOFFIT OVERHANG | SIDELIGHT CONCEPT

Sidelighting on east, south, and west exposures can permit direct solar glare and heat gain. It is necessary to shade windows to prevent excessive glare and gain. Overhang soffits provide a limited amount of shading and are best employed on the south façade (northern hemisphere) of the building.



AWNING | SIDELIGHT CONCEPT

Awnings or other extended shades offer additional protection and are generally needed on the east and west facades of the building.

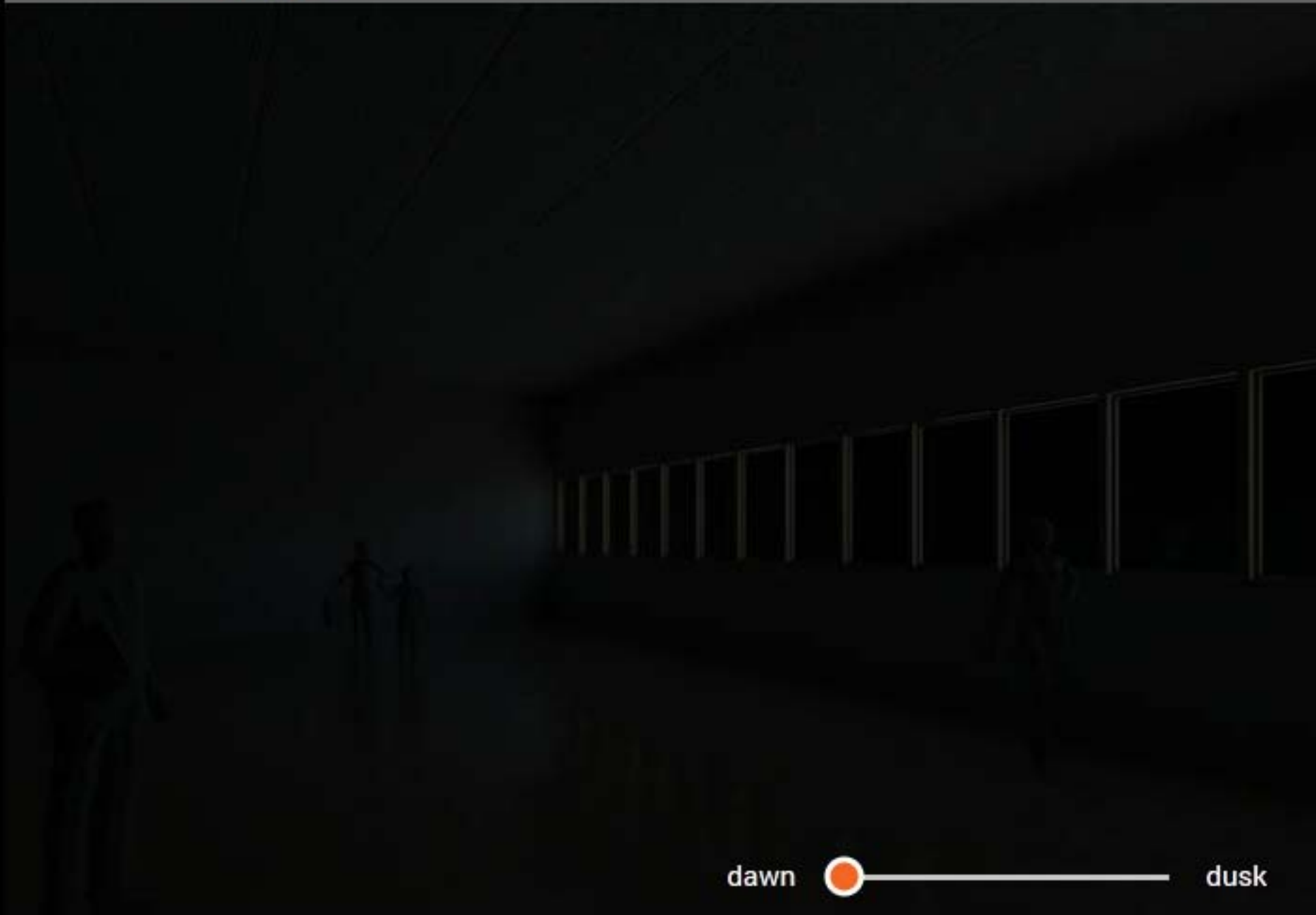


LIGHT SHELF | SIDELIGHT CONCEPT

A light shelf provides both shading and indirect lighting for the space, increasing the amount of daylight depth penetration. It is most effective on the south façade but can also be employed on the east and west facades. Additional window shading is generally needed on windows and sidelights, such as horizontal louver blinds, vertical louver blinds, solid shades, partially transmitting shades and draperies, etc.

WALL TYPE: **band windows** punctured windows curtain wall

SOLSTICE: **summer** winter



To see the live interactive module, [click here](#).